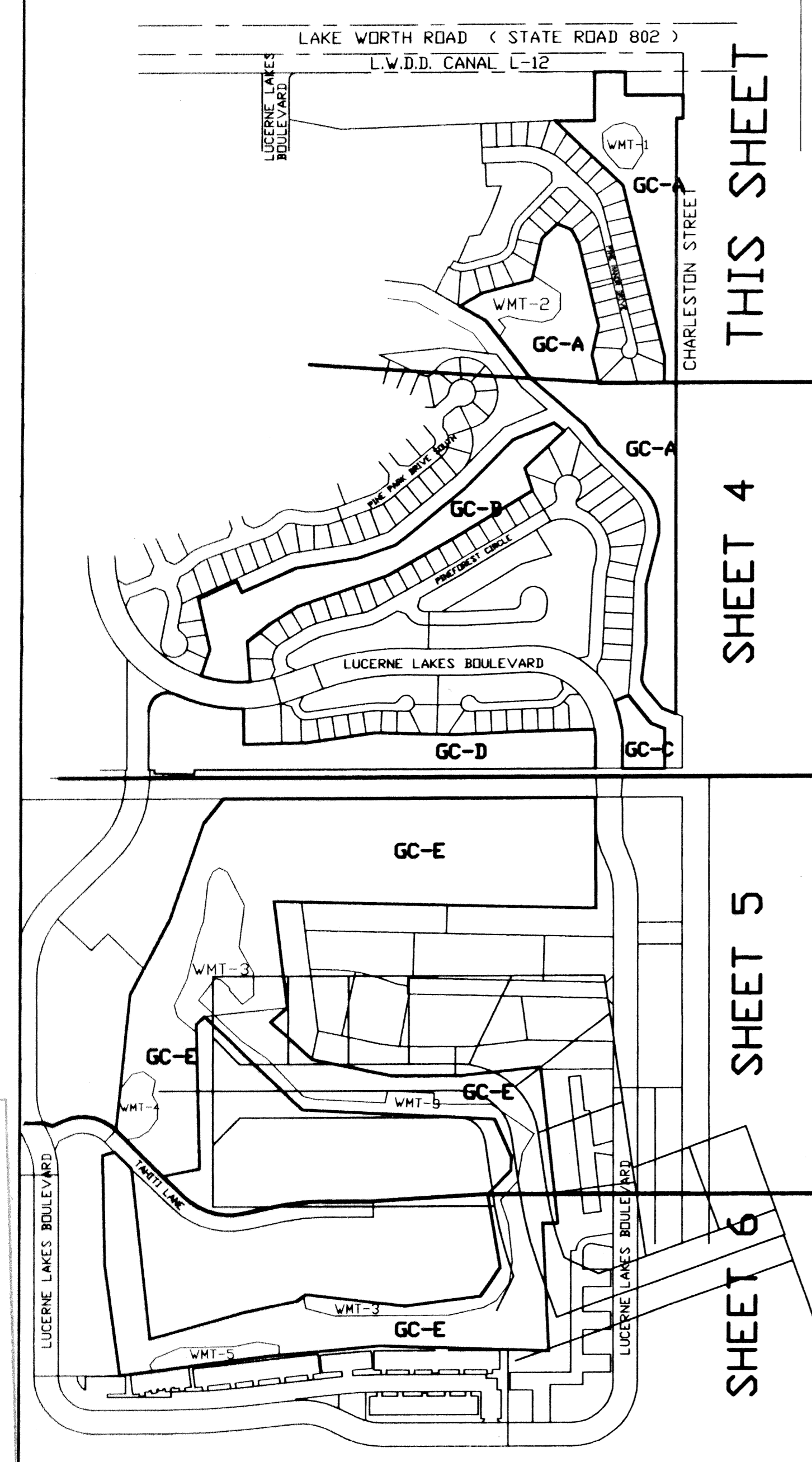
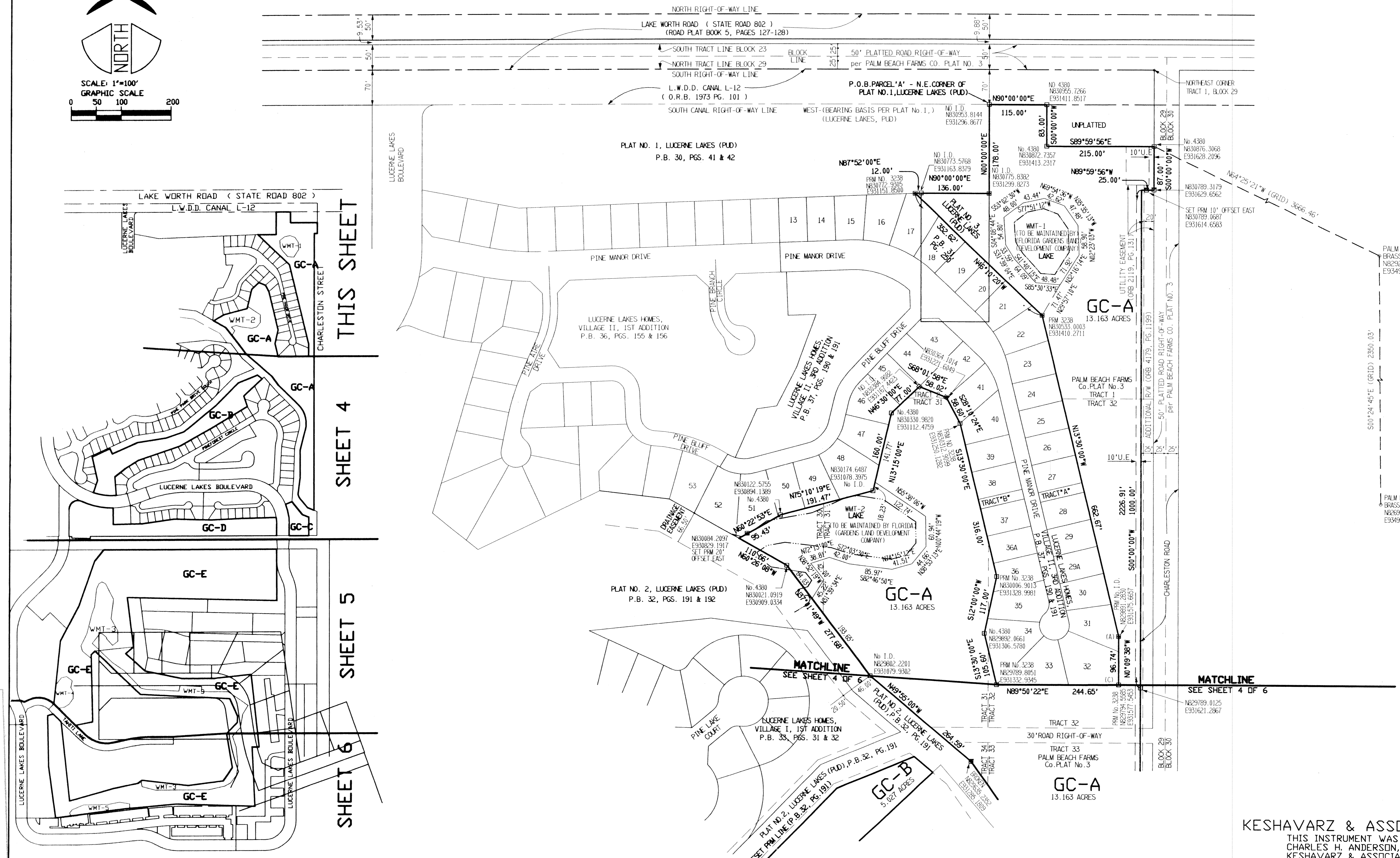
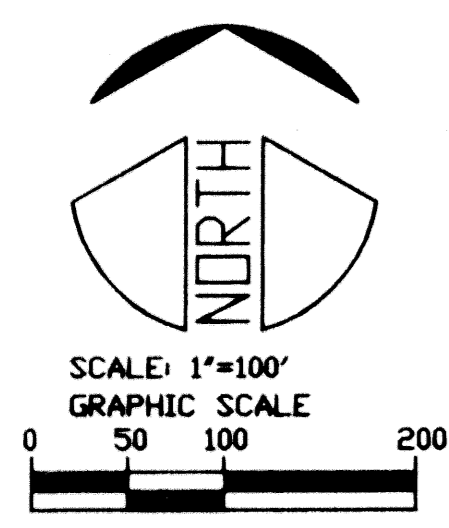


LUCERNE LAKES GOLF COURSE

A PORTION OF LUCERNE LAKES P.U.D.

LYING IN SECTIONS 28 AND 33, TOWNSHIP 44 SOUTH, RANGE 42 EAST, PALM BEACH COUNTY, FLORIDA, BEING
 A REPLAT OF A PORTION OF TRACTS 1, 2, 30 THROUGH 38, 58 THROUGH 71, 90 THROUGH 95, 98 THROUGH 103, AND 122 THROUGH 127,
 BLOCK 29, PALM BEACH FARMS Co. PLAT No.3 RECORDED IN PLAT BOOK 2, PAGE 45 OF THE PUBLIC RECORDS OF PALM BEACH COUNTY
 JANUARY 1999 SHEET 3 OF 6



KEY MAP

LUCERNE LAKES
 Golf Course
 BOOK 07
 FLOOD ZONE B
 QUAD # 40
 ZONING RJM
 ZIP CODE 33402
 TAZ 316
 PUD NAME Lucerne Lakes

KESHAVARZ & ASSOCIATES, INC.
 THIS INSTRUMENT WAS PREPARED BY
 CHARLES H. ANDERSON, IN THE OFFICE OF
 KESHAVARZ & ASSOCIATES, INC.
 1280 N. CONGRESS AVENUE SUITE 206
 WEST PALM BEACH, FLORIDA 33409
 TELEPHONE: (561)689-8600 FAX: (561)689-7476
 LICENSED BUSINESS No. L84897